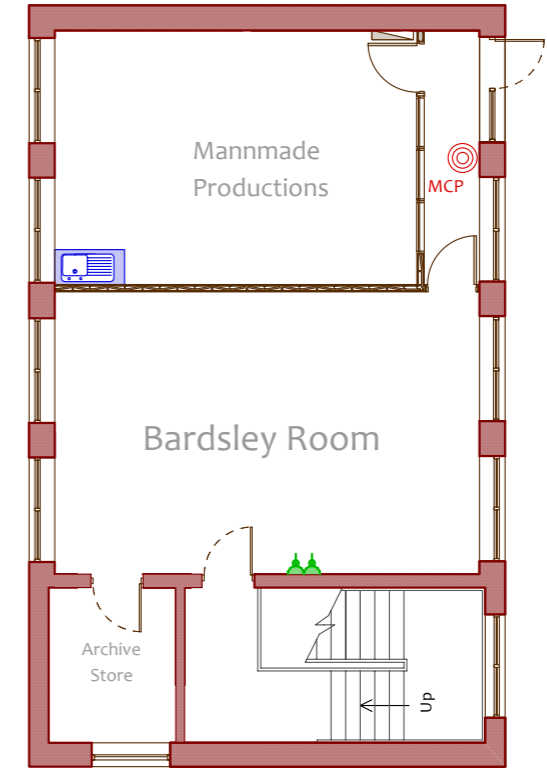


GROUND LEVEL
MELLOR PARISH CENTRE FLOOR PLAN



FIRST FLOOR
MELLOR PARISH CENTRE FLOOR PLAN

ROOM SIZES

The Arkwright Hall	13.7m x 6.4m (45' 0" x 21' 0")
Platform to Arkwright Hall	5.9m x 4.4m (19' 6" x 14' 6")
The Walklate Room	8.4m x 4.5m (27' 7" x 14' 9")
Freeman Room	9.4m x 7.3m (30' 8" x 24' 0")
Bardsley Room	9.4m x 7.3m (30' 8" x 24' 0")
Bartlett Library	3.4m x 3.3m (11' 1" x 10' 9")

Power points